

PILA BEAM

Pila Beam is a versatile seating system with strong design features, comprising of functional simplicity that will fit with confidence into any corporate or public waiting areas, healthcare or learning environments.

Pila Beam is built with a four leg frame and can be customised in a range of seating configurations with or without arms and an option of floor fixing legs.



STANDARD FEATURES

(*Selected models only)

- Steel frame
- Plastic seat*
- Upholstered seat*
- Beech seat*
- Plastic back*
- Beech back*
- Plastic end arms*

OPTIONAL FEATURES

- Floor fixing leg frame
- Black Plastic table (substituted for a seat)
- Choice of finish option available- see finish page

PERFORMANCE STANDARDS

This product has been designed to conform to the following standard and has been tested for type approval.

- BS EN 16139:2013

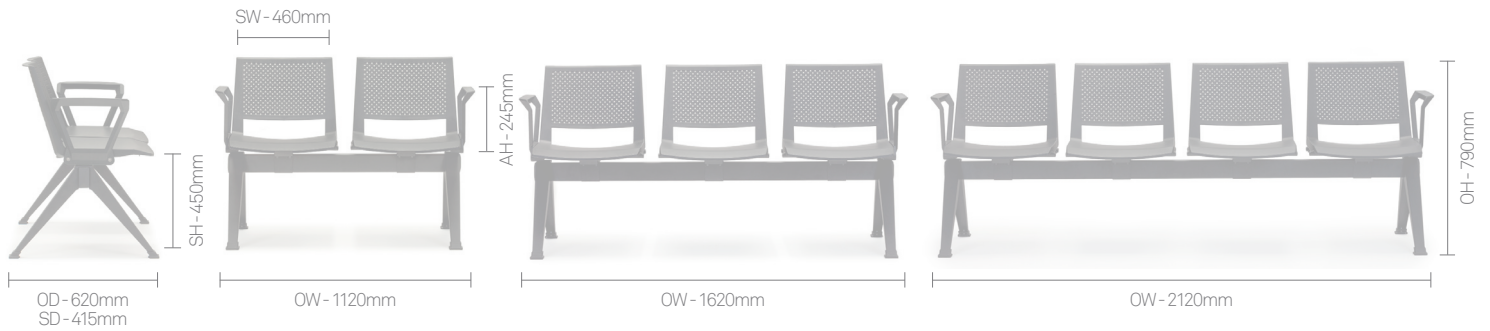
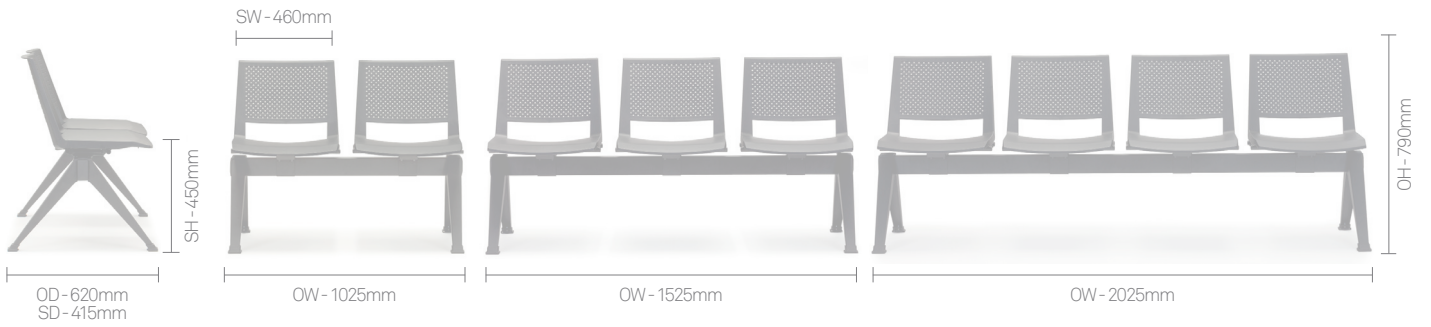
DIMENSIONS

OH-Overall Height OD-Overall Depth OW-Overall Width AH-Arm Height BH-Back Height SH-Seat Height SW-Seat Width SD-Seat Depth



DIMENSIONS

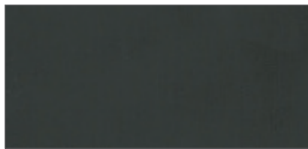
OH-Overall Height **OD-Overall Depth** **OW-Overall Width** **AH-Arm Height** **BH-Back Height** **SH-Seat Height** **SW-Seat Width** **SD-Seat Depth**



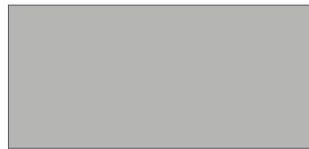
FINISH OPTIONS

- Tubular Steel 4 leg frame available in Black.
- Plastic seat and back available in Black, Light Grey, White, Cherry and Blue
- Beech seat and back available in Clear finish
- Plastic arms available in Black
- Plastic table available in Black
- Pila Beam can be upholstered in a broad range of contract upholstery fabrics and vinyls from The Senator Group standard upholstery collection

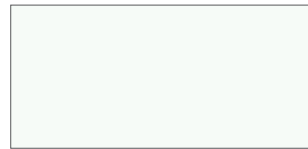
Plastic Seat & Back Finishes



Black



Light Grey



White



Cherry



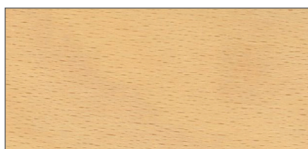
Blue

Plastic Arm & Table Finishes



Black

Wood Finishes



Beech

Frame Finishes

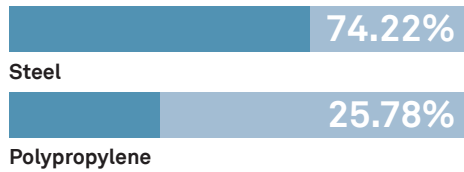


Black (Powder Coat)

ENVIRONMENTAL

Material Content

Components are constructed of the following



Recycled Content

Contains up to 37.00% of Recycled Material



Recyclability

The range is 99% recyclable

99%

Environmental information for this range has been based on PL-SS. For more detail please refer to individual EPA sheets.

THE SENATOR GROUP 3 R'S

The Senator Group is committed to continually improving the sustainability of all environmental aspects within our business.

To meet both international standards and our own environmental targets we apply the three R's principle

-Reduce, Reuse and Recycle.

Whilst recycling is the element which receives the most exposure it is actually the last option available and should never be the prime target in anyone's battle to reduce waste.

It is our duty as individuals and as a company to initially attempt to **Reduce** usage. Then we should look to **Reuse** wherever possible and finally, only after these two processes have been exhausted, should we consider **Recycling**.

-Reduce -Reuse -Recycle